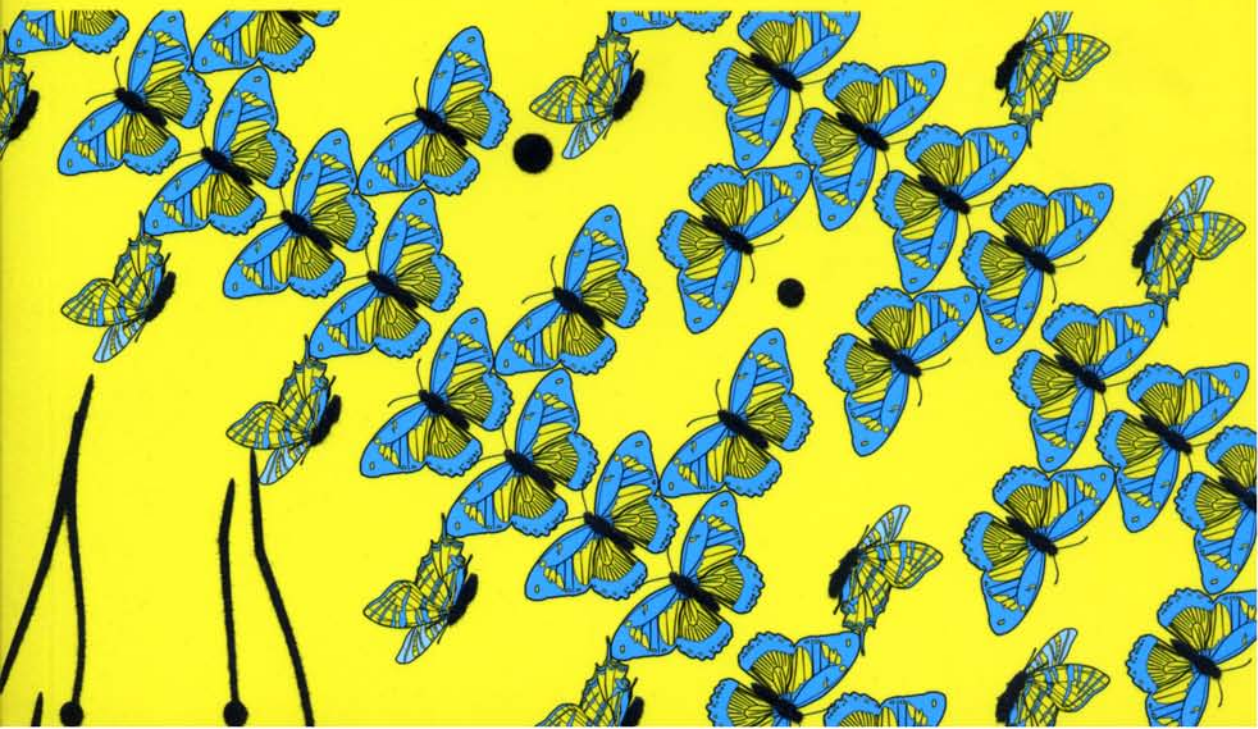




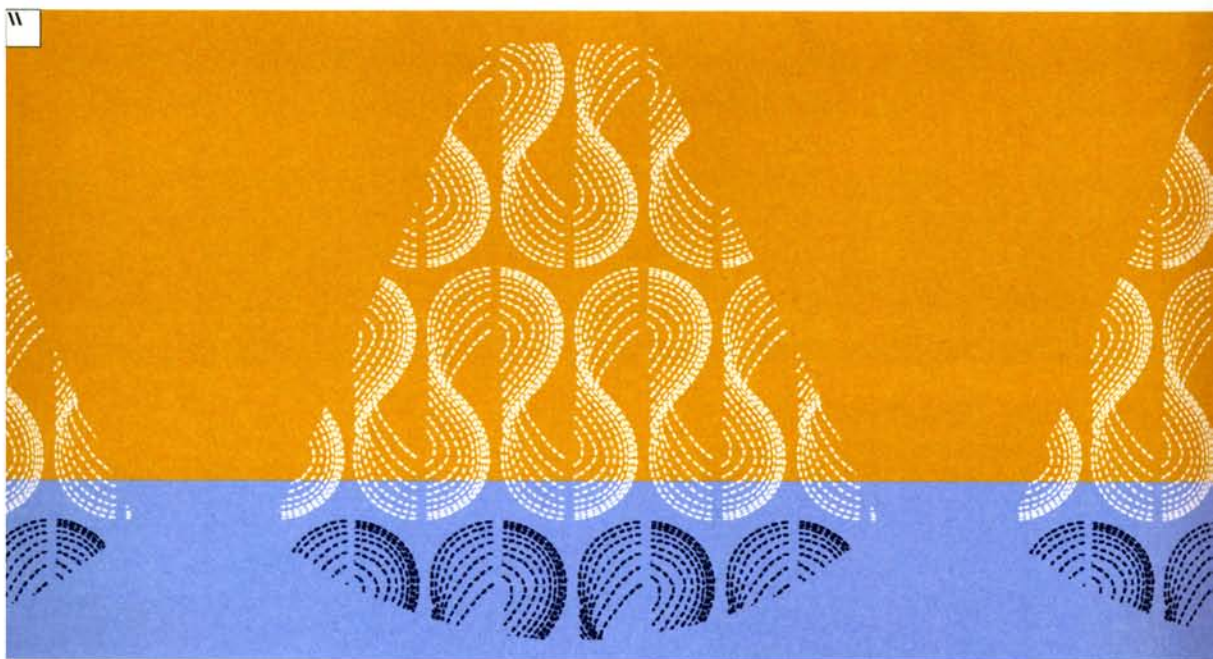
PATTERNS

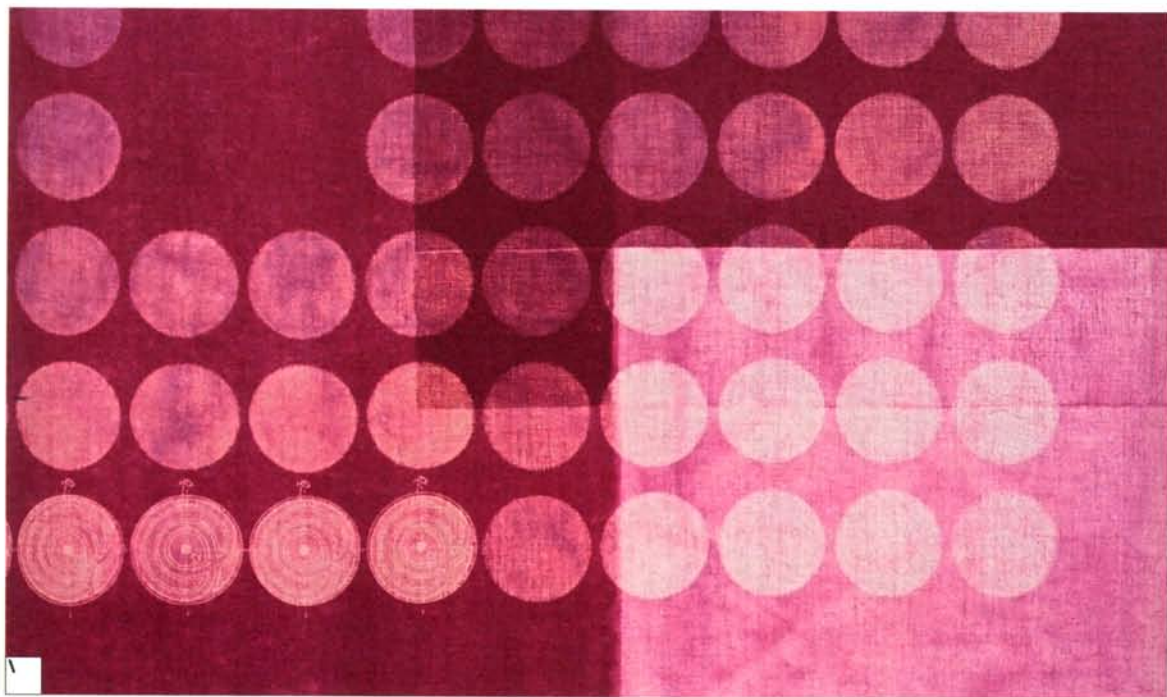
DRUSILLA COLE





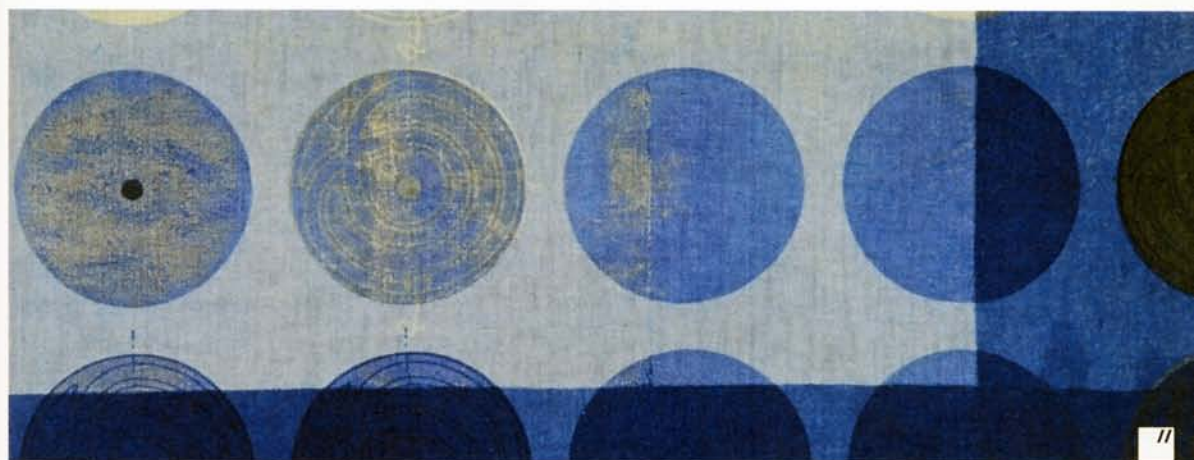
\ **Nathalie Pellon** _ Interlocking arcs in green over discs of yellow and mauve form this regular repeating pattern. \ **Joanna Kinnersly-Taylor** _ Swirls in white on yellow and blue have been screenprinted on to wool for this piece entitled 'Balcony Skirts'. It has been externally sited for the Fisherman's Mission on Fish Quay, North Shields, Tyne and Wear, UK.



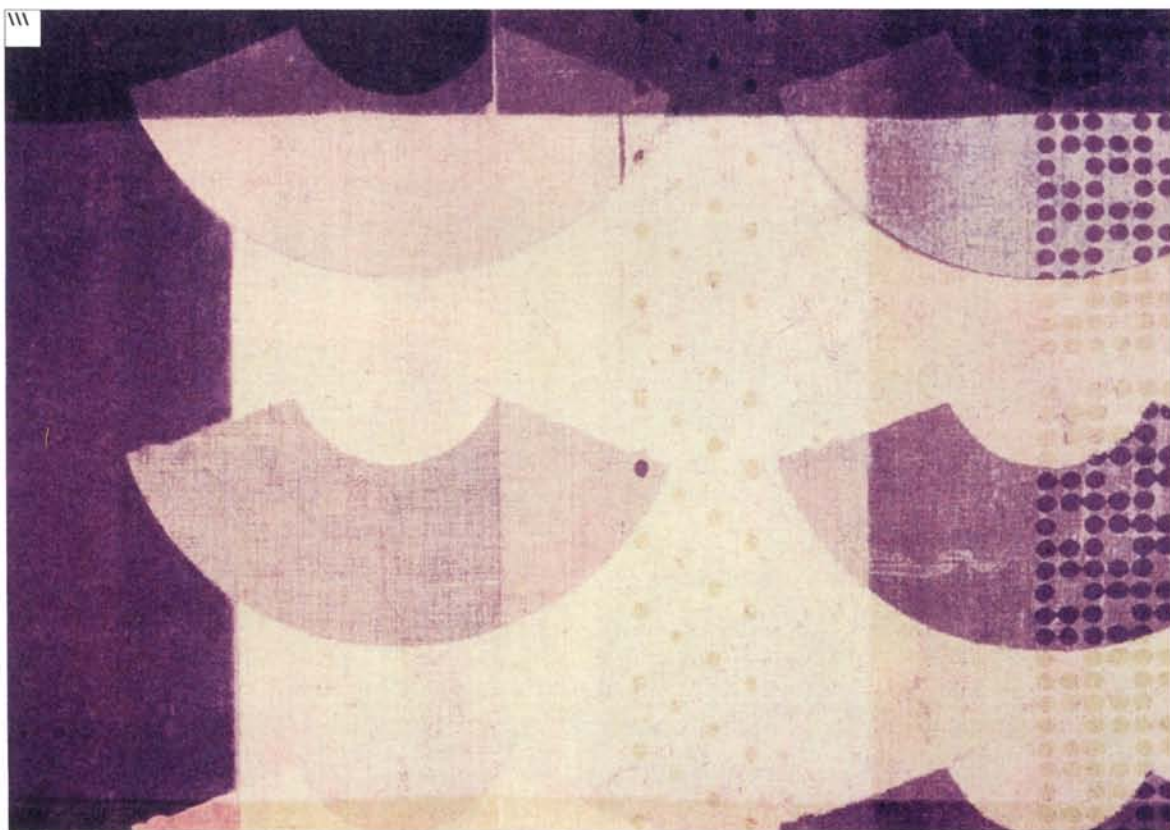
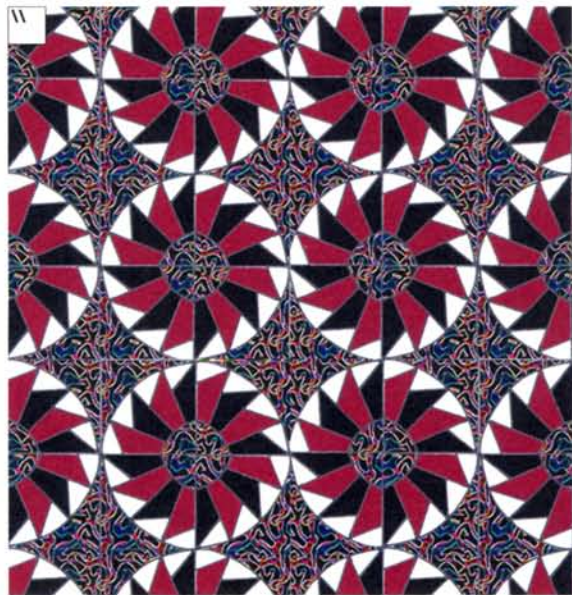
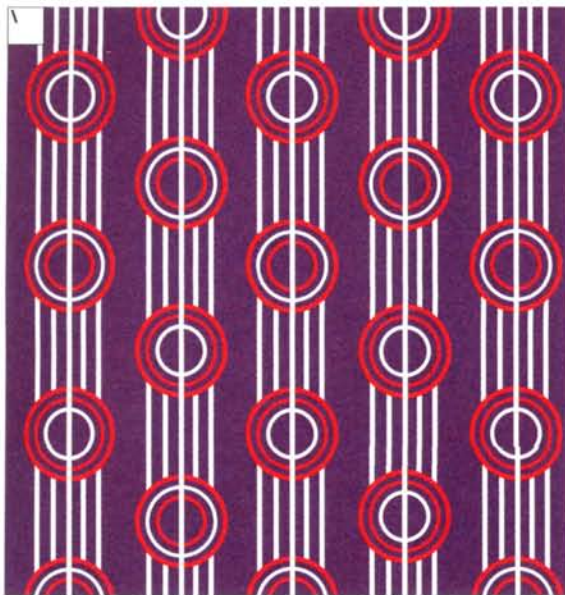


\ **Joanna Kinnersly-Taylor** _ Inscribed discs have been discharge printed over maroon rectangular shapes in this pattern, which is part of a series of works sited in the Mater Hospital, Belfast, Northern Ireland, UK. \\ **Dominic Crimson** _ These intense kaleidoscopic images for ceramic tiles are from a series entitled 'Glitz'.





I Marina Strumphler _ Neatly arranged, vertical lines of multicoloured spots and concentric circles form this digitally produced design. The colour and tension between the forms is an important feature in this apparently simple design. **II Marina Strumphler** _ Cut squares of coloured paper have been collaged with spots of black ink to create this fabric design. With its spare colour scheme and minimalist style, it may have been influenced by the paintings of Piet Mondrian. **I Gavin Wilshen** _ Entitled 'i-pattern', these understated vertical stripes are composed entirely of the letters E and Y. **II Joanna Kinnersley-Taylor** _ Inscribed discs in shades of indigo blue appear in a grid arrangement in this hand-dyed and printed textile. It is one of three works sited in the Mater Hospital, Belfast, Northern Ireland, UK. **III Joanna Kinnersley-Taylor** _ This discharge printed textile has been hand dyed using indigo and forms part of a design for aprons and Wellington boots for workers on Fish Quay, North Shields, Tyne and Wear, UK.



\ **Marc Burton** _ The regular concentric circles and straight white lines of this repeat have been drawn with military precision in this design for wallpaper. \ **Caroline McNamara** _ Spinning wheel shapes are repeated over a background of multicolour tracery in this digital textile design. \ \ **Joanna Kinnersly-Taylor** _ Dots, rectangles and collar shapes feature in this textile, which has been created by hand dyeing and discharge printing methods. To discharge a dye means to remove it partially or completely.